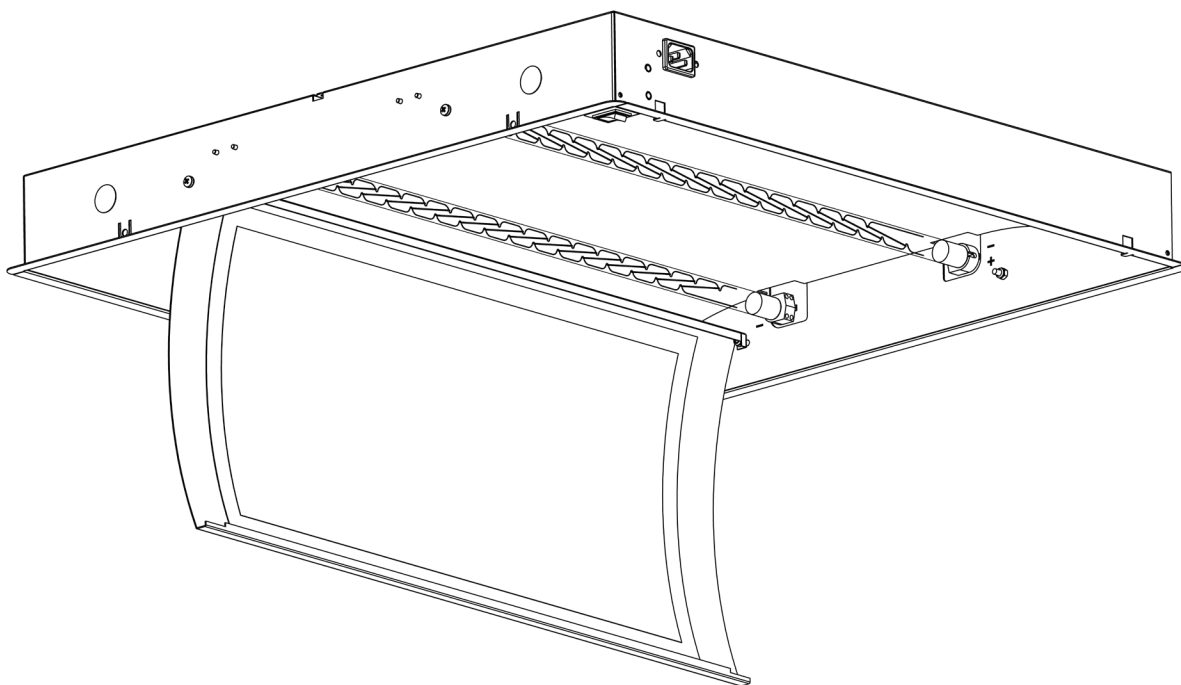


# ON-TOP *PRO2*

QUANTUM<sup>®</sup>  
LED



## INSTRUCTIONS FOR USE

October 2023

# ON-TOP PRO2 X - Instructions for Use

Instructions for use and maintenance - Please switch off system before servicing.



## PRECAUTIONS

ALL PESTWEST® SYSTEMS ARE FULLY INSULATED, CLASS 1 APPLIANCES, NEVERTHELESS, SENSIBLE PRECAUTIONS SHOULD BE OBSERVED:

## IMPORTANT SAFETY INSTRUCTIONS

- Disconnect the system from the power supply when not in use, before servicing, when changing lamps, cleaning, and similar actions.
- Keep out of reach of children.
- The Quantum X LED lamps produce ultraviolet light (UVA) at 370nm, which can be harmful to the eyes and skin. Avoid prolonged, close proximity exposure.
- Do not install where dangerous concentrations of flammable gases or dusts are likely to occur.
- Do not insert foreign objects into this system.
- Ensure the unit is properly grounded.
- If the power cord is damaged, it must be replaced by the PestWest, its service agent or a licensed electrician to avoid a hazard.
- Use extension cord marked SJW-A, SJEW-A, or SJTW-A only.
- The electrical rating of the extension cord must be equal to the electrical rating of the system.
- Use only extension cords which have anchors and receptacles which accept the fly traps anchor. Replace or repair damaged cords.
- Ensure that operators have adequate and secure working platform, when working on the system.
- Do not allow the glue board to become over-filled with dead insects. Change at regular intervals as required by the catch or at least every 6-8 weeks. Use only PestWest LED replacement glue boards (PestWest Part Number 135-000226).
- The On-Top Pro2 X is designed for indoor use only.
- Not suitable for use in barns, stables and similar locations.
- To maintain the attractive appearance of the system, wipe down and clean as often as required. Use a cloth dampened with water and detergent or a proprietary cleaner. Do not use scouring pads or abrasives.

## !! SAVE THESE INSTRUCTIONS !!

## PRODUCT DESCRIPTION

All PestWest systems are made using the highest quality materials. The bodywork is of conformal zinc steel (rust-resistant) frame with a polished aluminium reflector. The cover is brushed stainless steel and retains one PestWest full-size glue board. The OTP 2 X is installed with next generation Quantum X LED filament lamps with a peak wavelength of 370nm coated with FEP shatter-resistant coating as standard. The new Quantum X LED filament lamp is made with the familiar T5 form factor (glass tube, end caps and pins) used in our conventional 14W T5 fluorescent Quantum Lamps.

The unique advantages of Quantum X LED filament lamp technology are the extended pattern of light distribution and improved energy efficiency. Increased fly attraction is due to the LED filaments 360° light distribution compared to high power Surface Mounted Device (SMD) LEDs 120° light distribution (found within first-generation LED fly traps). LED filaments are more energy efficient than high power SMD UVA LEDs and fluorescent lamps.

Each Quantum X LED lamp consists of 18 LED filaments mounted on a frame. They are hermetically sealed within a glass tube with state-of-the-art gas cooling technology which is far superior to traditional metal heat sinks.

Each LED filament has 24 individual LEDs mounted on a transparent substrate, which enables the Quantum X LED lamp to provide light in all directions. The combination of 360° light distribution and softer intensity of light produced by far more LEDs (432 per lamp) gives the Quantum X superior flying insect capture performance.

## TECHNICAL SPECIFICATIONS

VOLTAGE RANGE	100-240V
FREQUENCY RANGE	50-60HZ
POWER CONSUMPTION (@230V 50HZ)	13.5W
INGRESS PROTECTION RATING	20
CLASSIFICATION	CLASS 1
AMBIENT OPERATING TEMPERATURES	(32°F TO 104°F)
LED DRIVER TYPE	CONSTANT CURRENT
AREA OF COVERAGE	(540FT <sup>2</sup> TO 645FT <sup>2</sup> )
REPLACEMENT STICKY BOARD	135-000226 LED 21" GLUE BOARD (6 PCS)
REPLACEMENT TUBES (2 QTY)	130-000321 QUANTUM X LED 370NM 550MM T5 SHATTER-RESISTANT
MOUNTING METHOD	CEILING RECESSED
UNIT DIMENSIONS	(23.3" X 23.3" X DEPTH: 2.75")
TO REPLACE SUSPENDED CEILING TILE SIZE	600MM X 600MM / 24" X 24"
WEIGHT	(12.3 LBS.)

## UNPACKING YOUR ON-TOP PRO2 X

Each ON-TOP PRO2 X is carefully inspected and packed before leaving our factory. Before discarding the outer carton, examine for obvious evidence of transport damage. Remove your ON-TOP PRO2 X carefully. Be sure to check all packing material for parts before installation.

## MODE OF OPERATION

Electrical flying insect systems operate on the principle that most flying insects are attracted to light, particularly to the ultraviolet (UVA) end of the light spectrum. Since insects are still active and will fly at night, these systems should be left operating 24/7/365.

## PLACEMENT

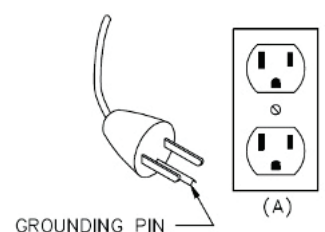
The efficacy of the ON-TOP PRO2 X can be affected by the intensity of other light sources (ambient light and daylight). Place the system where competition from other light sources is minimal.

Within food areas, place the system greater than 10 feet from food preparation surfaces or exposed food. Place to attract flying insects away from sensitive areas. Assess where flies aggregate and place the system in that area. Place the system where flying insects gain access (exterior windows and doors as well as dumpster and compactor areas).

Place the system where easily reached. Do not place over working machinery where access may be difficult or dangerous. Much more information is available in PestWest's Flying Insect Manual available at: <https://www.pestwest.com/us/training-manual-request/>

## ELECTRICAL SUPPLY

The ON-TOP PRO2 X is supplied with a removable 6.5ft (2m) input electrical cable which is terminated in a connector to match the local electricity supply. The system operates from a 220-240V, 50-60Hz electrical supply. To extend the input electrical cable, consult with a licensed electrician. Ensure that once installed, the power cord is adequately secured.



# ON-TOP PRO2 X - Instructions for Use

Instructions for use and maintenance - Please switch off system before servicing.



## INSTALLATION

Possible risk of fire, electrical shock, and/or other hazards. It is recommended that the electrical portion of this installation

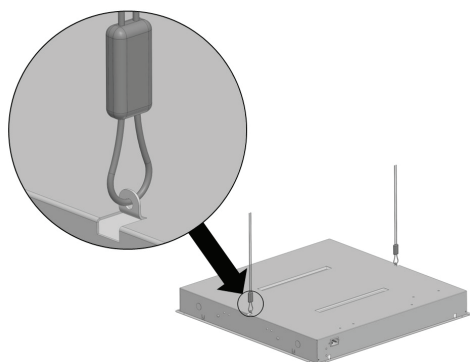
be performed by a licensed electrician. Consult with your local code enforcement officials for specific regulations regarding installation of this system. PestWest USA assumes no responsibility for claims resulting from improper or careless installation or handling of this product.

The system is designed to fit into NEMA Type 'G' suspended ceilings with tile areas of 24" x 24". If 48" x 24" panels are being used, then a 24" cross bar is included for converting 48" ceiling tiles into 24". After determination of the best deployment location (see 'PLACEMENT' section), remove a ceiling panel. Ensure the ceiling framework is the correct cut-out size to retain the system safely and securely. Ensure the framework is strong enough to take the weight of the system (minimum of 40 lbs). It is necessary for the system to be securely fastened to the ceiling-framing member by mechanical means such as bolts, ties, screws, or rivets, etc.

Remove all protective film from the various metal parts. Fit the system into the suspended ceiling frame and ensure it is properly secured. Using cable or zip ties, secure the power cord to the framework from the power supply to the ON-TOP PRO2 X. Once the system is correctly installed into the ceiling, remove the backing paper from the glue board and place into the front cover so that the glue is facing upward toward the lamps. Turn the system on by the illuminated power-on switch. Secure and hinge the front cover back up onto the two studs.

No ceiling suspension hardware is provided with this system. Ensure ceiling-framing and selected ceiling suspension hardware are strong enough to support the weight of the system or a minimum of 40 pounds. The system must be securely fastened to the ceiling-framing or the roof framing structure by mechanical means such as non-corroding hardware and cable(s).

For increased stability, it is recommended the system be anchored using the two tabs on the back (or top) of the system housing (see image below).



## CLEANING AND MAINTENANCE

Always switch-off the ON-TOP PRO2 X for maintenance. To clean your system, always use a cloth dampened with water and a MILD non-abrasive detergent. Do not use scouring pads or abrasives.

The ON-TOP PRO2 X Quantum X LED lamps should be replaced at least once every 3 years. Record the system installation date on the label (side of system).

The Quantum X LED lamp is made from glass and has a shatter-resistant coating (use in glass exclusion zones). This shatter-resistant coating is the highest quality available. FEP shatter-resistant coating is both UVA and operating temperature tolerant, while allowing high UVA emission.

## CHANGING THE GLUE BOARD

As to ensure optimum performance of the ON-TOP PRO2 X, install only PestWest LED 21" glue boards. The specialty LED glue board has been developed in combination with the PestWest Quantum X LED lamp. Using any other glue board will have a negative impact on the performance.

Regular assessments of the glue board are recommended. The glue board should be changed when full or at least every 6-8 weeks. Switch off the system before servicing. Undclip the front cover from the switch side and let it hinge downwards.

Remove the used glue board by lifting it out of the cover. Remove the backing paper from the new board and place it into position on the cover, adhesive side facing outwards towards the UVA lamps.

Note: To better match the cover, before placement, gently bend the glue board along the more central perforation line (a curved shape). Replacing the cover is the opposite procedure to removal. Need help with identification? Connect with the PestWest technical team, get assistance at <https://www.pestwest.com/us/ask-dr-stuart-mitchell/>

## REPLACEMENT PARTS

Glue board type: 135-000226 (LED 21" GLUE BOARD - PK6)

Lamp type: 130-000321 (Quantum X LED 370nm 550mm T5 Shatter-Resistant)

Use only original PestWest replacement parts!

## CHANGING THE UV LED LAMPS

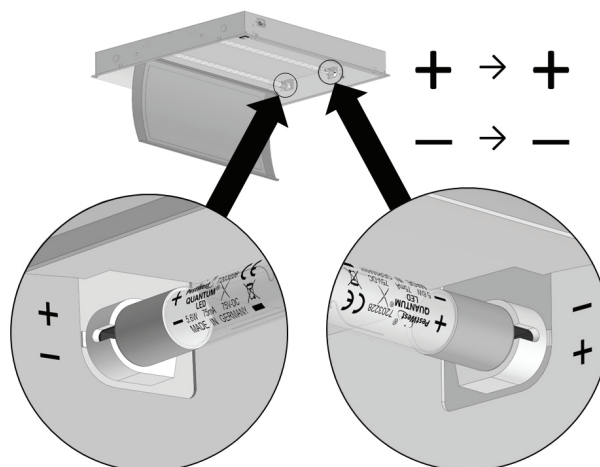


**Switch off the system before servicing. LED lamps are not like fluorescent lamps. Failure to disconnect the system from the electrical supply (while removing or inserting a lamp) may permanently damage the LEDs. This will result in LED lamp irreparable damage and is not covered under the warranty.**

Switch off the system before servicing. Undclip the front cover from the switch side and let it hinge downwards.

Grasp and rotate each LED lamp 90° until 2 clicks are heard. The LED lamps can be withdrawn by sliding them out of the lamp holders.

**CAUTION** – Quantum X LED tubes are powered by Direct Current (D.C.) at one end only, which is easily recognized by the silver end cap and the printed + & - symbols etched onto the glass. The D.C. input pins require fitting in the correct polarity, positive (+) and negative (-). Please note that the correct polarity is marked with a + & - symbol on the Quantum X LED glass tube and the corresponding pins must be fitted to the corresponding + & - symbols on the metalwork, located on the side reflector of the system, next to the lamp holders as shown on the following diagram.



Replacing the LED lamps is the opposite procedure of removal. Close the front cover by swinging it back up into position and switch the system back on.

## WARRANTY

All PestWest systems are warranted for 3 years (excluding LED lamps and glue boards). PestWest reserves the right to vary model specifications without notice..

IN NO EVENT SHALL PESTWEST USA LLC BE LIABLE FOR ANY DIRECT, INDIRECT, PUNITIVE, INCIDENTAL, SPECIAL, OR CONSEQUENTIAL DAMAGES, TO PROPERTY OR LIFE, WHATSOEVER ARISING OUT OF OR CONNECTED WITH THE USE OR MISUSE OF THIS PRODUCT.

# ON-TOP *PRO2*

QUANTUM<sup>®</sup>  
LED

**All PestWest flying insect systems traps  
include a 3-Year Warranty**  
(excludes LED lamps and glue board).

Scan the QR code to register your 3-year warranty or visit  
**<https://support.pestwest.com/pestwest-warranty/>**



October 2023



**WARNING:**

Cancer and/or Reproductive Harm  
[www.P65Warnings.ca.gov](http://www.P65Warnings.ca.gov)

**PestWest Electronics Ltd operates a quality  
management system certified to ISO 9001**

PestWest USA LLC  
7135 16th Street E, Suite 124 Sarasota, FL 34243  
Tel: 941.358.1983 |  
Toll Free: 866.476.7378 Email: [customerservice@pestwest.com](mailto:customerservice@pestwest.com)  
**[www.pestwest.com](http://www.pestwest.com)**

Confidence in  
**Fly Control**