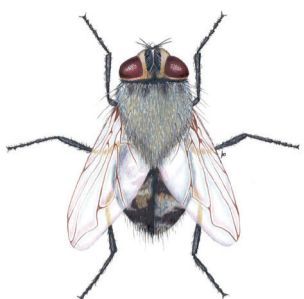


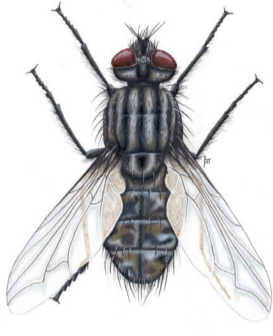


Cluster fly, *Pollenia rudis*



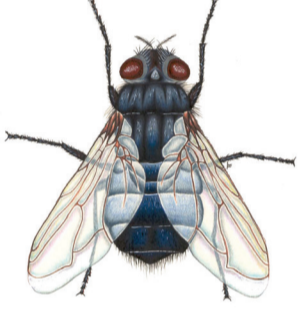
- Length: ~10 mm
- When at rest, wings fold atop the abdomen
- Thorax presents a unique dark gray-olive hue, adorned with golden hairs
- Abdomen possesses a distinct checkered pattern

Flesh fly, *Sarcophaga spp.*



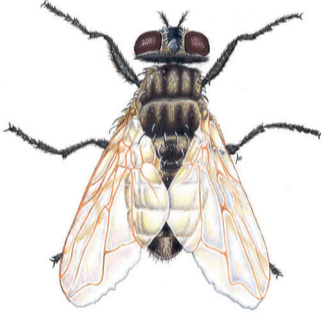
- Egg (resource sites), larva (moist), pupa (dry), adult (free-ranging)
- Larviparous (birth maggots)
- Length: 6 mm to 11 mm
- Red tip on ventral abdomen
- Carrion, meat waste, animal feces, and garbage
- Dumpsters
- Forensic entomology model
- Myiasis potential

Blow fly & Bottle fly, *Calliphoridae*



- Egg (resource sites), larva (moist), pupa (dry), adult (free-ranging)
- Oviparous
- Length: 4 mm to 16 mm
- Metallic black, green, blue, or bronze
- PMI carrion, plant waste, animal feces, and garbage
- Dumpsters
- Forensic entomology model
- Myiasis potential

House fly, *Musca domestica*



- Egg (resource sites), larva (moist), pupa (dry), adult (free-ranging)
- Oviparous
- Length: 6 mm to 8 mm
- Fourth vein on wing bends forward almost reaching third vein
- Garbage, plant waste, animal feces, and rotting food
- Dumpsters
- Most significant synanthropic filth fly species

www.pestwest.com

PESTWest USA LLC, 7135 16th Street E, Suite 124, Sarasota, FL 34243
OFFICE: 941.358.1983 FAX: 941.358.1916 TOLL FREE: 866.476.7378
EMAIL: CUSTOMERSERVICE@PESTWEST.COM



PestWest[®]
www.pestwest.com

Find us on: Twitter Facebook

TO LEARN MORE
SCAN HERE



Discover Pesky Flies **Up Close!**

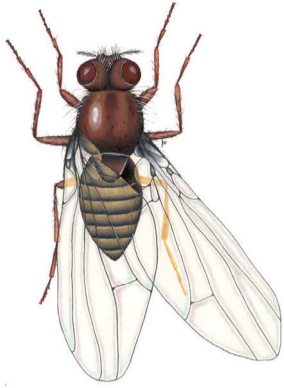
**PEST
PAL**
Insect Profiles

Confidence in
Fly Control

FLYING INSECTS

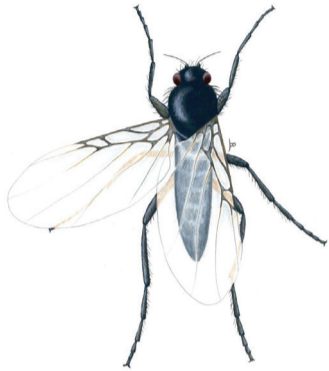


Fruit fly, *Drosophila* spp.



- Egg (resource sites), larva (moist), pupa (dry), adult (free-ranging)
- Oviparous
- Length: 3 mm to 4 mm
- The wing has 1 cross vein and 4 veins to the edge
- Rotting produce, fermenting liquids, sugary syrups, and effluence
- Yeast cells express acetate compounds to attract flies for cell translocation & colonization

Phorid fly, *Megaselia* spp.



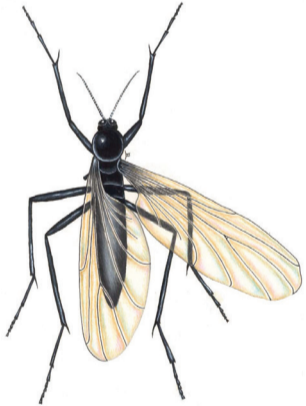
- Egg (resource sites), larva (moist), pupa (dry), adult (free-ranging)
- Oviparous
- Length: 1 mm to 6 mm
- The wing has no cross vein and 3 veins to the edge
- Carrion, black water, effluence, and breaches
- Behavior of "running" before flying
- Myiasis potential

Moth fly, *Telmatoscopus albipunctatus*



- Egg (resource sites), larva (moist), pupa (dry), adult (free-ranging)
- Oviparous
- Length: 2 mm to 5 mm
- The wing has no cross vein and 10 veins to the edge
- Gelatinous (biofilms) fermenting materials and effluence
- Filters, drains, septic tanks, and breaches

Fungus gnat, *Bradysia coprophila*



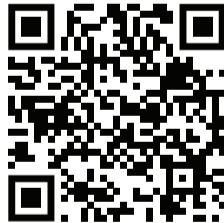
- Egg (resource sites), larva (moist), pupa (dry), adult (free-ranging)
- Oviparous
- Length: 1 mm to 13 mm
- The wing has 1 cross vein and 6 veins to the edge
- Larvae feed upon fungi associated with plant roots (aid in decomposition)
- Typically flat roof leaks and overwatered houseplants

TECH ALERT!

Step into the future with our new Mantis® LED filament range! Switching from fluorescents to Quantum® X LED filament technology provides significant energy-savings and a powerful 360° attraction. Change is here!

CURIOUS FOR MORE?

Scan the QR code to see our Quantum® X Webinar



QUANTUM® LED SYSTEMS

